



Spring 2024, Issue 1

A Message From Dean Doherty

We are in the midst of yet another technological transformation that will move us forward into a world of information created by machines. If we believe that Artificial Intelligence (AI) is now firmly entrenched in our lives, then we should begin questioning how it impacts us both positively and negatively.

An understanding of how AI works, what it can and cannot do, and what potential it may have are essential issues to address in discovering the difference between truth and fiction. **CONTINUE READING**



Faculty & Staff

Spotlights

Duke Meche started as the library's IT systems specialist in early January, overseeing the library websites and serving as backup LOUIS systems administrator.

Madison Manuel joined the Research & Access Services department as a library specialist, working evenings in Research Services.

McKenzie Spears is the new library specialist in Special Collections, where she is an archives assistant.

Peter Klubek was named assistant professor and head of Research & Access Services in January. He was previously interim head and a research librarian within the department.

Highlights

Peter Klubek, assistant professor and head of Research & Access Services, presented his research on railroad travel posters of the 1920s and 1930s to the Art Library Society of North America (ARLIS/NA) Mountain West Chapter. The chapter hosted their virtual Lunch and

Learn where Peter explained his current research project that examines the visual and cultural nuances of railroad travel posters from this era, exploring the intersection of art, marketing and societal values. Utilizing a multidisciplinary approach, the study analyzes design elements, color palettes and textual content to identify recurring themes. By contextualizing the posters within the socio-cultural landscape of the time, the research aims to reveal how these artifacts reflected and influenced public perceptions of rail travel. The investigation delves into representations of destinations, landscapes and diverse demographics, unraveling the ways in which the railway industry targeted varied audiences. The findings contribute to a nuanced understanding of the posters as cultural artifacts, offering insights into their role in shaping attitudes towards transportation and leisure during a transformative period in history.

Dr. Zachary Stein, assistant professor and interim assistant dean of Technical Services, and his co-author, Roxanne Bourque (UL Lafayette College of Education), won the "Best Paper" award for the paper they presented at the International Organization of Social Sciences and Behavioral Research (IOSSBR) conference in Biloxi in November. The paper is titled "*Autoethnographic Archives and Folklore: Building a Collection of Undergraduate Children's Stories on the Institutional Repository.*"

Past Exhibits & Events



Krewe de Coulee

A library team pitched in at the Office of Sustainability's second annual Krewe de Coulee post-Mardi Gras cleanup event. Each team was assigned a stretch along Johnston Street to beautify after a fun but messy Mardi Gras season. The teams collected beads, toys, trash and much more. The Office of Sustainability worked with Keep Lafayette Beautiful to weigh the collected trash: 170 volunteers collected 1,085 pounds of litter.



America's Black Cowboys

Black cowboys made substantial impacts on the history of the American Old West, but their influence is frequently ignored or undervalued. Jacqueline L. Jones, library director at Baton Rouge Community College, hosted a thought-provoking conversation titled "Forgotten Trailblazers: America's Black Cowboys," shedding light on this overlooked aspect of Western history.



Library Ghost Hunting

Using ghost hunting equipment purchased with a Friends of Humanities grant, Professor Shelley Ingram led her English 370 Ghost Hunting class on a spooky quest through the halls of Dupré Library. With electromagnetic field detectors, the students' exploration focused on the third floor and the original staircase. Using a spirit box that allows ghosts to communicate through radio waves, one group of students had a conversation with a spirit in the stairwell. [READ MORE](#)

Academic Showcase - 125 Edition



Dupré Library houses a team of librarians who excel as scholars, educators, curators, innovators and collaborators. At the University's 125th Anniversary Academic Showcase, more than 300 individuals delved into the rich academic and research resources showcased by the library. Among the highlights were cutting-edge initiatives available to faculty, staff and students, including asynchronous tutorials, the Library of Things, personalized research consultations and the 20th Anniversary commemoration of the globally recognized Cajun and Creole Music Collection.

Grants

Library Receives \$45,000 in Funding

Library of Things & VIPathways Program

A STEP Grant funded "Edith Garland Dupré Library: Student Life Enhancement Through a Library of Things." Grant co-principal investigators **Peter Klubek**, head of Reference & Research Services, and **Tiffany Ellis**, senior instructor and head of User Engagement, were awarded \$5,350.00 to expand the technology category in the [Library of Things](#) collection. The funds were used to purchase graphing calculators, universal laptop chargers, ring lights, projectors and projection screens, presentation remotes, USB microphones, green screen kits, sound machines, photo boxes and drawing tablets.

UL Lafayette's Student Center for Research, Creativity and Scholarship awarded two grants to the library.

An Advance Equipment Grant funded "Library of Things: Anatomical Models, Skeletons and Histology Slide Sets." **Tiffany Ellis**, senior instructor and head of User Engagement, was awarded \$9,987.43 to purchase 31 anatomical models and two histology slide sets for the [Library of Things](#) collection.

An Advance Faculty Grant funded "VIPathways." **Olivia Peltier** and **Andrea Broussard**, instruction librarians, were awarded \$2,500 to purchase supplies, food, décor, marketing and swag for six events in the Spring and Summer for students enrolled in Pathways of Distinction

or Excellence. **VIP (Very Important Pathways)** is a proposed program that expands upon the existing connection between Advance, the Pathways program and Dupré Library.

Library Study Spaces Upgrades

Dupré Library strives to provide an environment that fosters student collaboration. To enhance its role as a vital and effective resource, the library received a Student Technology Enhancement Program Grant for \$26,727 to fund improvements to its first-floor group study rooms. The grant will fund the purchase of comfortable, high-quality seating, glass whiteboards, presentation monitors, wall-mounted fans, additional electrical outlets and dry-erase markers and erasers.

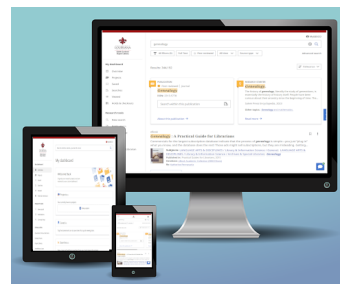
The library features nine group and four single-occupant study rooms where students work on class assignments, practice presentations and prepare for exams. Study rooms are assigned on a first-come, first-served basis with a two-hour time limit and generate an average of 3,900 annual checkouts. During busier times in the semester, rooms go quickly, requiring students to wait until a space becomes available. Updating the group study spaces will help maximize study and collaborative spaces to address current needs and create inviting and engaging student spaces.

Grant co-principal investigators were **Heather C. Plaisance**, associate professor and assistant dean of Public Services; **Tiffany Ellis**, senior instructor and head of User Engagement; **Jennifer Hamilton**, assistant professor and head of Instructional Services; and **Daniel Falcon**, retired head of Circulation Services.

Featured Resources

Coming Soon: New Library Search Interface

Library Search, our EBSCO Discovery Service (EDS), is a single search tool that connects users to content from full-text articles, eBooks, local collections such as the library catalog and more. EBSCO redesigned EDS to meet the ever-evolving user expectations for accessing, searching, choosing and using library resources. Library Search will switch to the new user interface during the summer. **VIEW VIDEO**



Library Now a Preservation Steward Partner With the GPO

Preservation stewards are partner libraries that commit to retain, preserve and provide access to specified tangible or print depository resources of the **National Collection of U.S. Government Public Information**. **Sandy Himel**, associate professor and head of U.S. Government Information, submitted a proposal for preserving the library's Federal depository publications of two agencies: the United States Commission on Civil Rights and the historical Archive of Folk Song of the Library of Congress. **READ MORE**



Services

Schedule a Research Appointment

At the start of the year, the Dupré Library instructional services team rolled out a new and

improved system for scheduling research appointments. Patrons can now self-schedule using our automated booking page by selecting a day, time and librarian, and their appointment will be immediately confirmed through our calendar, eliminating the need for back-and-forth emails or phone calls. Included in this system is a new service: small group research appointments. Students, faculty and staff of all levels can use this service for booking one-on-one or small group research appointments for assistance conducting searches using library resources and locating sources. **AUTOMATED BOOKING SYSTEM**

✔ SELECT A SERVICE

<p>Small Group Research Appointment</p> <p>A small group research appointment with a ... Read more</p> <p>1 hour 15 minutes</p>	<p>One-on-one Research Appointment</p> <p>Struggling to find the right resources for yo... Read more</p> <p>45 minutes</p>
---	--

Reference & Circulation Departments Merged

We are excited to announce the merger of the Reference Department and Circulation Department, resulting in the formation of the Research and Access Services Department. This strategic integration aims to streamline operations, enhance library experiences and provide comprehensive support for research and information access needs. By combining expertise in reference assistance and circulation services, we are committed to offering seamless access to resources while fostering a culture of inquiry and learning within the UL Lafayette community.

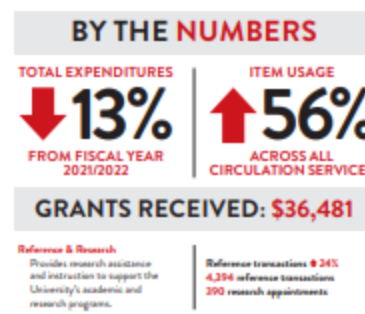
From one location, patrons can now get help finding peer-reviewed articles, pick up a reserve item, check out a study room and more! Staff are on hand to guide users through the space and can take them directly to the many resources available. The Research and Access Services Department serves as the face of the library, embodying our dedication to accessibility, knowledge and community engagement.

Lagniappe

Library Annual Report Brochure

This report summarizes services and collections achieved with state support, donor generosity and grants awarded to faculty and staff, as well as highlights from the University Libraries' 2022/23 fiscal year.

[VIEW BROCHURE](#)



Give to the Library

Edith Garland Dupré Library is the vibrant information center of the University of Louisiana at Lafayette. Giving to the library enriches the focus on learning and research while providing resources to the community. Dupré Library welcomes gifts of monetary funds, endowment funds, individual book purchases and library materials.

[GIVE NOW](#)

[WAYS TO GIVE](#)

Help Us Get Better

If you have a concern about something related to Edith Garland Dupré Library, please take a moment to let us know about it. We welcome all comments and suggestions. Submissions are anonymous if you choose. **GIVE US YOUR FEEDBACK**

Edith Garland Dupré Library
University of Louisiana at Lafayette
400 E St Mary Blvd, Lafayette, LA 70503
(337) 482-6025
duprelibrary@louisiana.edu
library.louisiana.edu

[[Past Dupré Digest Issues](#)]

Dupré Library



Special Collections



A Federal Depository Library



Member of LOUIS Library Consortium

Editorial Team: Tiffany Ellis, Peter Klubek, Olivia Peltier, Susan Richard, Laura Truxillo, and Laurie Vanderbrook

Article Contributors for This Issue: Sandy Himel, Heather Plaisance

[Forward to a Friend](#) | [Subscribe](#) | [Unsubscribe](#) | [Privacy Policy](#)

This email was sent to:

This email was sent by: **University of Louisiana at Lafayette**
104 E. University Circle
Lafayette, LA 70503
louisiana.edu

